

PIP-MS/MSX SERIES

MAXIMUM Power Point Tracking

SOLAR up to 80A*

LCD DISPLAY

HIGH FREQUENCY

PURE SINE WAVE

AC CHARGER

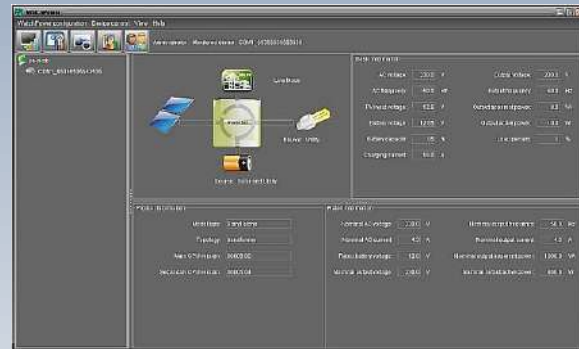
USB PORT

STACKABLE*

PB ACID/LIFEPO4

* Only on 48V models

NEW

Now MPPT model in
12v (812MS/1212MS)!

MONITORING SOFTWARE — WATCHPOWER

KEY FEATURES

- **Built-in MPPT solar charger 20A~80A Max!**
- **Now available in 12Vdc model — PIP 812MS/1212MS**
- Max AC charging up to 60A (48v models only)
- Max total system charging: 60A + 80A = 140A* !
- High frequency, light-weight design
- Programmable menu
- Adjustable Bulk/Float Voltage
- Supports various lead acid batteries
- Inverter+ AC Charger + Solar Charger 3-in-1 design
- Pure sine wave output
- 2X surge capacity up to 5 seconds
- USB communication
- LCD monitor display system info + LED indicators
- FREE monitoring software included
- Built-in generator starter dry contact**
- Overload/Overtemp/short circuit protections
- Cold start capability (requires DC)

Only 48V models are PARALLEL-READY.
Optional Parallel Kit required for all units
in parallel and sold separately.

* Inverter-type generators are recommended for better compatibility. Conventional type may be rejected.

sales@mppsolar.com | www.mppsolar.com

MPP Solar
Buying Solar should be this easy

Specifications



PIP-MS/MSX Series

812

1212

824

1624

2424

2424MSX

3248

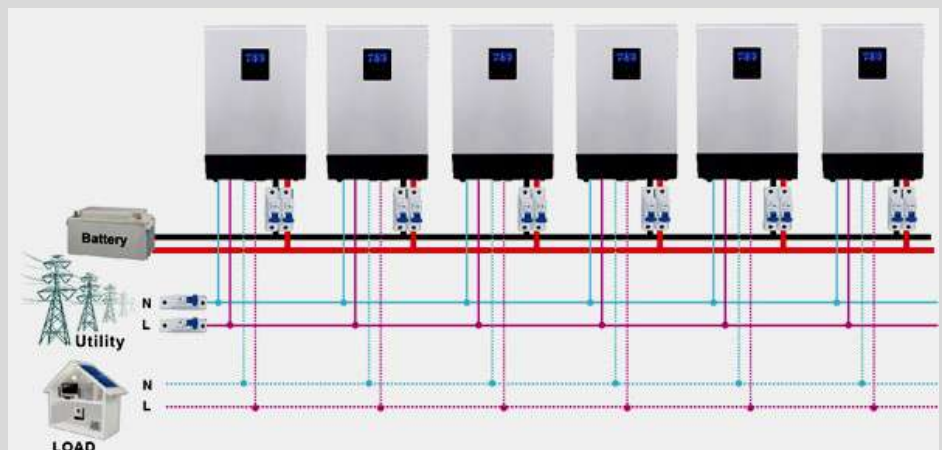
4048

ELECTRICAL SPECIFICATIONS								
Continuous Output	800W	1.2KW	800W	1.6KW	2.4KW	2.4KW	3.2KW	4.0KW
Surge Rating	5 seconds max, 2X							
Input Power Factor	0.8							
Input Voltage Range	90~280VAC (Appliance mode), 170~280VAC (UPS mode)							
Input/Output Frequency	50Hz / 60Hz							
Output Voltage	230VAC±5%							
Output Waveform	Pure Sine Wave							
Output Regulation	< 3% RMS for battery voltage range							
Peak Efficiency	90%	93%	91%	93%				
Nominal DC Voltage	12V	12V	24V				48V	
Max DC Voltage	15.5V	16V	31V				60V	
Transfer Time (2 Modes)	<10ms (UPS mode), <20ms (Appliance mode)**							
Charging Mode	3-stage							
Bulk Voltage (Flooded, AMG/GEL)	14.6V/14.1V	14.6V/14.1V	29.2V/28.2V				58.4V/56.4V	
Float Voltage	13.5V	13.5V	27.0V				54.0V	
Max AC Charging Current	20A	60A	10-20A	20-30A			60A	
No Load Power Consumption	<15W	<20W	<25W				<50W	
Power Saving Consumption	<5W	<10W	<10W				<15W	
Solar Charger								
Max PV Input / Output	500W	500W	600W		1500W		4000W	
Max Charging Current	40A	40A	25A		60A		80A	
Max PV Input Voc, MPPT Range	102V, 15V~80V	100V, 18~80V	75V, 30~66V			145V, 30~115V		145V, 60~115V
Algorithm	MPPT							
ENVIRONMENTAL / MECHANICAL SPECIFICATIONS								
Certification	CE							
Operating/Storage Temp.	0°C ~ 55°C / -15°C~ 60°C							
Operating Humidity	5~90%RH Non-Condensing							
Dimension	95*240*316mm	355*272*100mm				479*295*140mm	468*295*140mm	
Net Weight	5.2Kg	7.0Kg	7.0Kg	7.1Kg	7.5Kg	11.8Kg	11.5Kg	11.5Kg

** Transfer time may be longer (30ms) when used in parallel configuration and this may cause interruption in certain load.



Only 48V Modles
Parallel Support
now up to 9 units
max! (36kw based
on 4kw/unit)



*Product specifications are subject to change without prior notice. MPP Solar is a registered trademark of MPP Solar Inc.